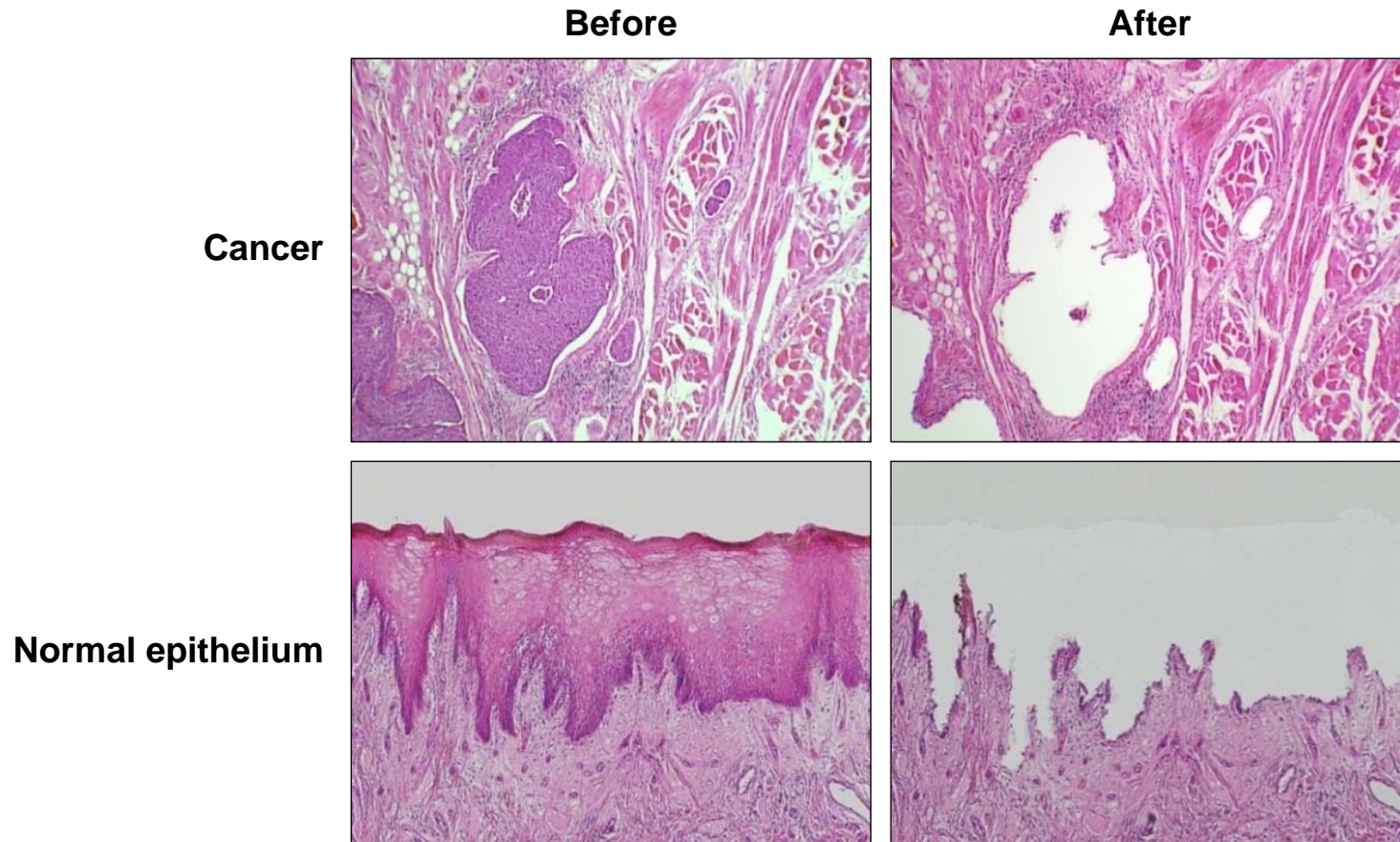


Cancerous and normal tongue tissues microdissected from formalin-fixed paraffin-embedded (FFPE) tissues

Laser microdissection



2DICAL makes quantitative proteomic analysis feasible with trace amounts of protein samples prepared from FFPE tissues. We succeeded to identify several proteins differentially expressed between normal and cancerous epithelia of the oral cavity.