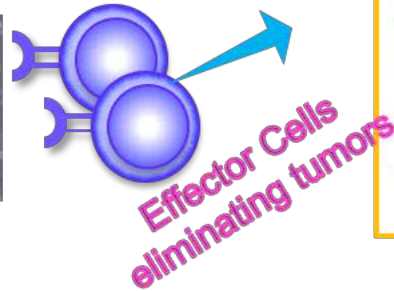
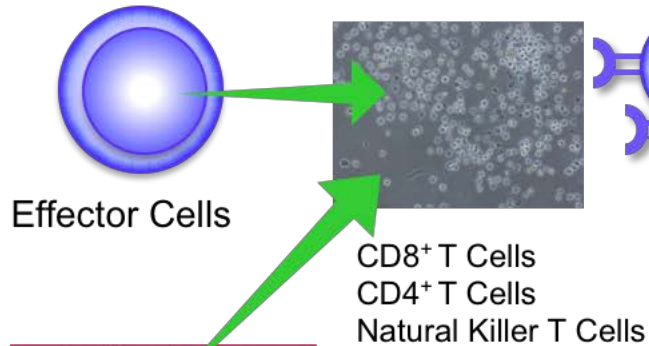
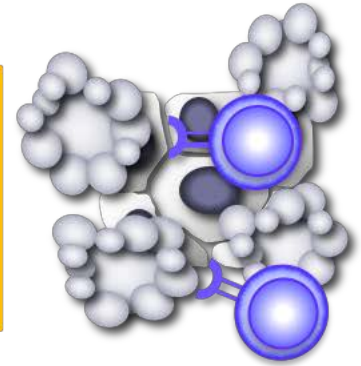


# Cancer Immunotherapy Using Genetically Engineered iPSC-derived Immune Cells

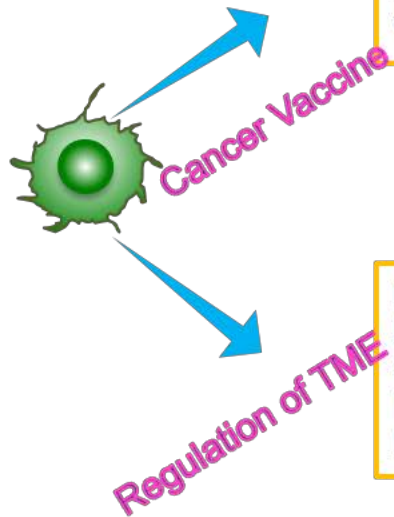
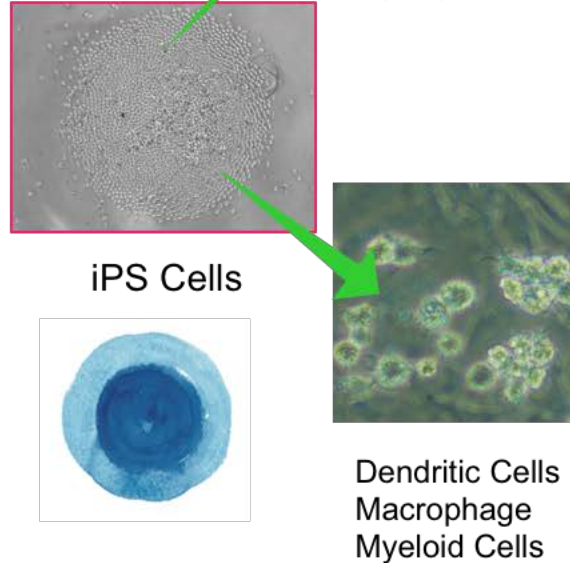


**Novel Effector Cells  
(Genetic Modification)**

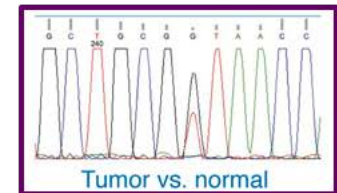
- T Cell Receptor (TCR)
- Chimeric Antigen Receptor (CAR)



Targeting the Cancer Neoantigens



**Relapse Prevention  
Vaccine**



**Novel Cell Preparation  
Regulating Host Immune  
System, Tumor  
Microenvironment, and  
Hematopoietic System**

